




About

- Comfortable and breathable towelling material.
- No label: 100% customisable for your brand.
- Made in Portugal.

Made in Portugal. 80% organic cotton and 20% recycled polyester . Combed cotton. Towelling material. Straight fit Garment washed after assembly: colours vary between products. Chest pocket. Two-button placket. Inner taped neckline with herringbone. Side slits with inner herringbone trim. 1x1 rib cuffs. Half-circle in the back.

 210 g/m² 

Sizes

 S - M - L - XL - XXL - 3XL

More information

Logistic

 5

Country of origin

 30



PT - Portugal

Customs code

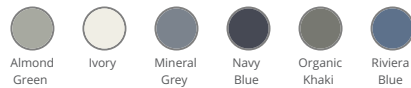


61051000

Washing instructions



Colours

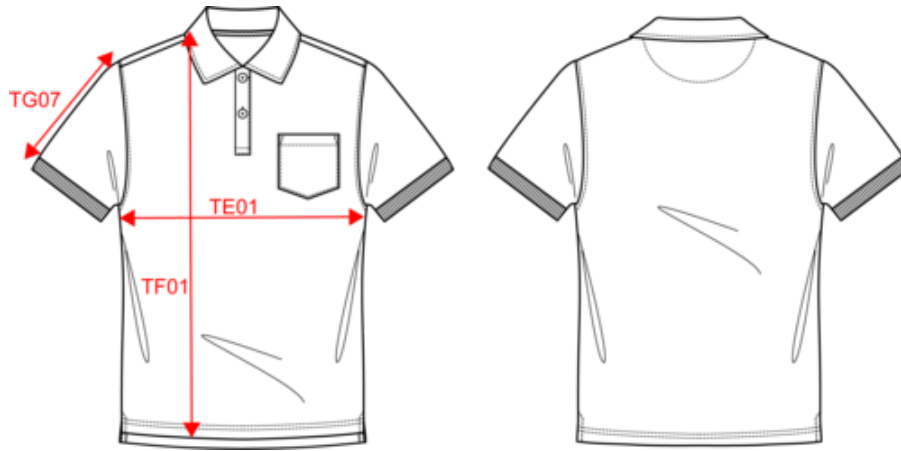


Certifications



NS227
Men's Terry Towel polo shirt - 210gsm

Dimensions (cm)



Measurements in cm	S	M	L	XL	XXL	3XL
TE01 - 1/2 chest width at 1.5cm below armhole	50.00	53.00	56.00	59.00	62.00	65.00
TF03 - Front total height from HSP	69.00	71.00	73.00	75.00	77.00	79.00
TG07 - Short sleeve length	20.50	21.25	22.00	22.75	23.50	24.25

NS227

Men's Terry Towel polo shirt - 210gsm

Colours information



Almond Green
 RVB : 140,143,129
 Pantone C : 416C
 Pantone TCX : 16-6008TCX



Ivory
 RVB : 236,231,218
 Pantone C : 7534C
 Pantone TCX : 11-0701TCX



Mineral Grey
 RVB : 94,104,116
 Pantone C : 431C
 Pantone TCX : 18-4215TCX



Navy Blue
 RVB : 41,45,57
 Pantone C : 433C
 Pantone TCX : 19-4010TCX



Organic Khaki
 RVB : 85,87,76
 Pantone C : 418C
 Pantone TCX : 19-0312TCX



Riviera Blue
 RVB : 66,97,133
 Pantone C : 7699C
 Pantone TCX : 18-4027TCX

Logistic



5



30

Sizes	Width (cm)	Height (cm)	Length (cm)	Net weight (kg)	Gross weight (kg)	Pieces/Box	Pieces/Bundle
S	40.00000	40.00000	60.00000	5.83000	7.23000	30	5
M	40.00000	40.00000	60.00000	6.04000	7.44000	30	5
L	40.00000	40.00000	60.00000	6.28000	7.68000	30	5
XL	40.00000	40.00000	60.00000	6.82000	8.22000	30	5
XXL	40.00000	40.00000	60.00000	7.21000	8.61000	30	5
3XL	40.00000	40.00000	60.00000	7.72000	9.12000	30	5